

# COLLECTION

# 2.0



EXPERIENCE WOOD  
AT ITS BEST!

**SHINNOKI**  
PREFINISHED WOOD PANELS



## CONTENTS

Introduction	02-03
Product construction	04-05
The collection	06-07
A sustainable product	08-09
Lookbook	10-36
Table	37
Technical info	38-39



# COLLECTION 2.0

## PREFINISHED ARCHITECTURAL WOOD PANELS, READY TO USE

Shinnoki gives you a wide choice of sturdy, high-quality prefinished veneered panels, ready to be applied in any interior. Our range of no less than 17 widely differing real wood designs has been put together to cover all kinds of styles, from classical to trendy.

One key aspect of Shinnoki is its consistency. Thanks to a unique veneer mix-match technique (see next page), Shinnoki has the desired look and benefits of a panel made with solid hardwood lumber, without any of the disadvantages. This means that the Shinnoki 2.0 Collection guarantees uniform quality with the natural, lively appearance of wood, both visually and to the touch. The Shinnoki product range offers a broad choice of colors, styles and species of wood - with eight different variants for our premium European white oak alone!

### The benefits of Shinnoki in a nutshell:

- 17 different real wood designs, from classical to contemporary
- Consistent colors thanks to the industrial varnishing process
- The look of solid wood, thanks to our unique mix-match technique
- Deliverable immediately
- Sustainable (see pages 8 and 9)
- Can be processed simply and quickly
- Can be combined with Par-ky floors

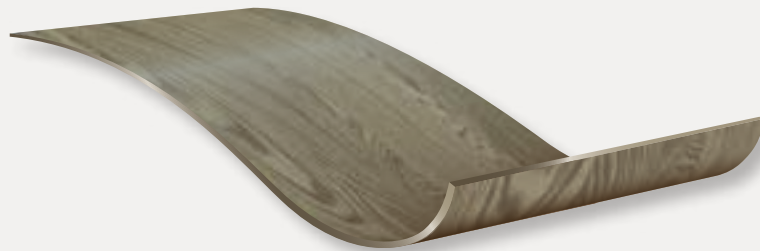
# SHINNOKI

PREFINISHED WOOD PANELS

# SHINNOKI

PREFINISHED WOOD PANELS

## A GENUINE WOOD TOP LAYER



There's nothing like the real thing. That's why the top layer of Shinnoki is a jointed veneer sheet, composed using our unique **mixmatch technique**. To ensure we have something for every taste, we consulted with a group of top European designers. Their input resulted in a distinct selection of trendy colors and structures. Every variant in our product range emphasizes the natural structure of the wood, by first brushing and then staining each individual sheet. The production method gives the PANELS more structure than the PLY. The result is visible and perceptible: this is real wood.

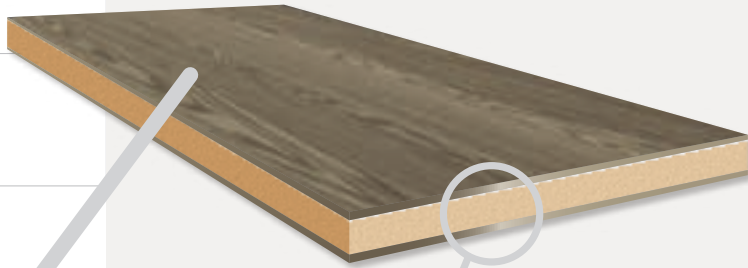


### What is mixmatch?

Mixmatch is a technique in which we joint wood veneer sheets together that come from different trees and have been cut in different ways. The effect is to give it the natural appearance of solid wood. When a continuous surface is created using different boards, there are no visual breaks in the pattern. Just as with solid wood, every board is different, but they still belong together. The result is a finished sheet with a lively look and uniform quality.

# SHINNOKI PANELS

2790 x 1240 x 19 mm ( 3/4" x 4' x 9' )



SHINNOKI PANELS are made up of a top layer of veneer, an 18 mm MDF core and a balance layer on the back for stability. This range of wood veneer panels does not need any further finishing. There are limitless possibilities for millwork application; from kitchen cabinets or wardrobes to office interiors and retail fixtures. Shinnoki fits easily into any commercial, retail, hospitality or residential project.

\* Shinnoki can be produced in other thicknesses, panel sizes and core options for larger projects. Please contact the sales team for more details.



For a seamless finish, matching edge banding options are available. For each design, there is either the option to use a 1 mm ABS edge banding or a through-and-through colored 0.6 mm real wood veneer edge banding (see page 37).

## DOUBLE-SIDED

Double sided Shinnoki is finished on both sides with the same Shinnoki veneer, color and lacquer. They have a protective transparent foil layer that is simple to remove.

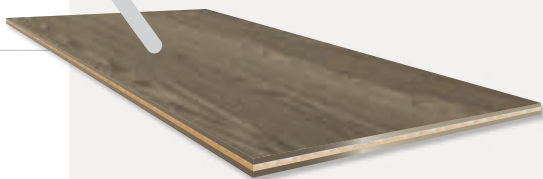
## SINGLE-SIDED

Single sided Shinnoki is finished on one side with the Shinnoki veneer. For structural stability the back side of the panel is finished with a B-Grade European Beech veneer which has been finished with a clear primer only to protect it perfectly against moisture. The top layer has a protective transparent foil layer that is simple to remove.

\* Sometimes your delivery may also contain a double-sided panel. In this case, the side that does not have the protective foil is the back.

# SHINNOKI PLY

3000 x 1220 x 1,5 mm ( 1/17" x 48" x 118" )



SHINNOKI 3-PLY veneer sheets are made of 3 layers of wood veneer, the top layer of which is the prefinished Shinnoki. This ultra-thin sheet is sturdy and flexible enough to be bonded to curved surfaces. SHINNOKI 3-PLY Veneer Sheets can also be applied to alternative substrates such as doors and ultralight panels, enabling the designer to use Shinnoki in Various applications. No further finishing is then needed. The best way to glue SHINNOKI 3-PLY is shown through a video found on [www.shinnoki.com](http://www.shinnoki.com). This video shows the two possible ways of gluing SHINNOKI 3-PLY: using a cold press or with contact adhesive.

## THE COLLECTION

We brought in a team of top European designers or “trend-watchers” to advise us on how to put our Shinnoki range together. Their input was the basis for determining the colors and adding structure. The result is a powerful collection of 17 varied designs, including a wide choice of no less than 8 in premium European white oak.



1



2



3



- 1 NATURAL OAK
- 2 IVORY OAK
- 3 MILK OAK
- 4 DESERT OAK
- 5 MANHATTAN OAK
- 6 MYSTERY OAK
- 7 ANTIQUE OAK
- 8 CHOCOLATE OAK

The overview on this page should whet your appetite. If you would like to see a complete sheet or have a closer look at one or more of these designs, please go to [www.shinnoki.com](http://www.shinnoki.com).



10



12



9



11

- 9 VANILLA LARCH
- 10 DUSK FRAKÉ
- 11 TEMPERED FRAKÉ
- 12 SAND ASH
- 13 MIDNIGHT ASH
- 14 GRANITE WALNUT
- 15 SMOKED WALNUT
- 16 SHADOW MACASSAR
- 17 NERO LATI



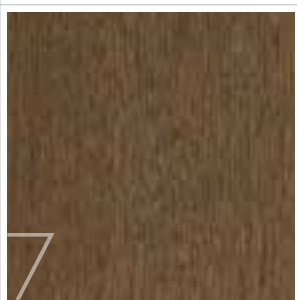
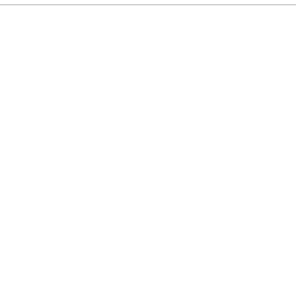
4



5



6



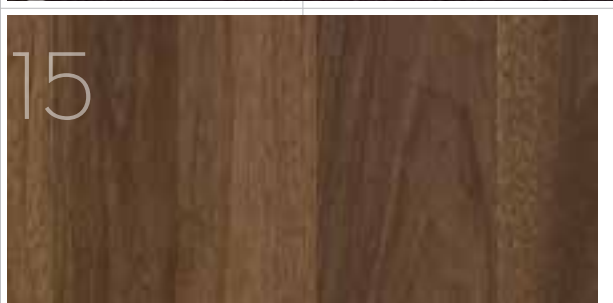
7



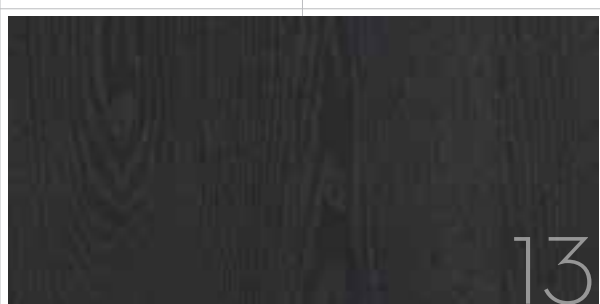
8

# SHINNOKI

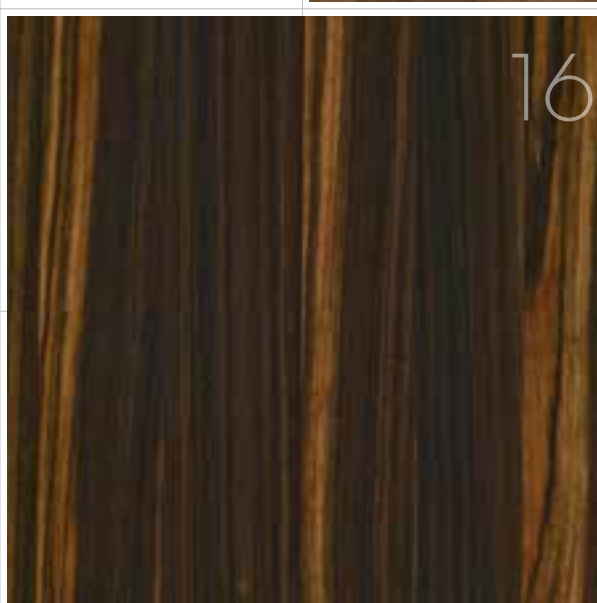
PREFINISHED WOOD PANELS



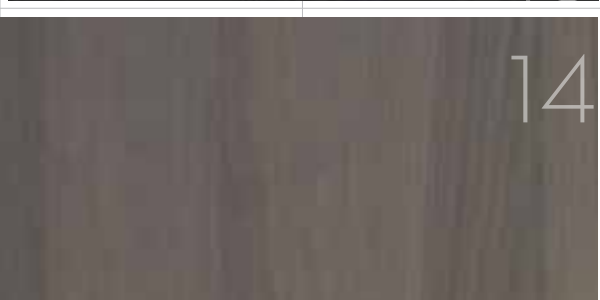
15



13



16



14



17

## Being an environmentally friendly business is much more than just a fad.

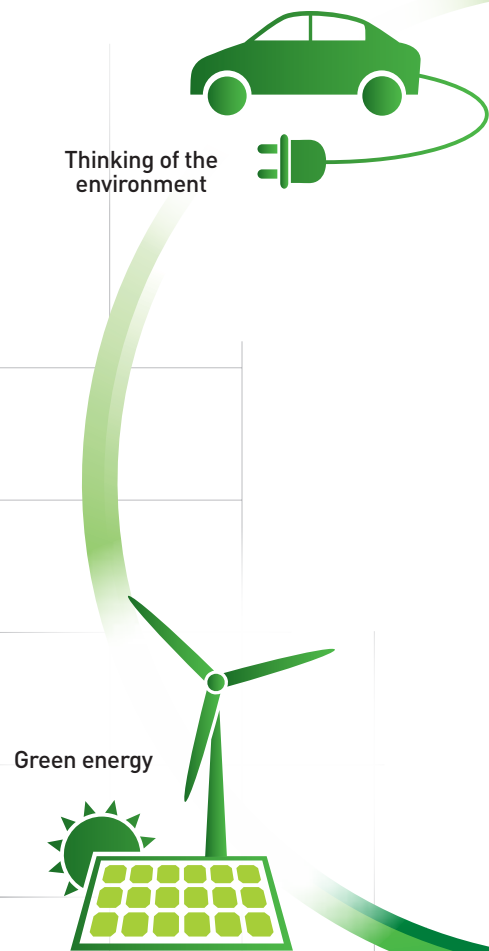
As a leading manufacturer of veneer-based products with a number of branches in Europe, we at Decospan are aware of our responsibilities in terms of our environmental impact.

Respect for nature and ecologically sound business practices are no longer trendy or an original way of making your company stand out from the crowd: for us, it has become an unconditional basic principle.

Like any company that respects itself and its environment, we are aware of the importance of considering the future and being aware of the environment when doing business. Themes such as being CO<sub>2</sub> neutral, using water carefully, thinking carefully about mobility, renewable energy and recyclable materials are therefore part of our everyday way of doing things.

Because we are aware of our responsibilities in terms of our environmental footprint, we make agreements with all our suppliers that we will only purchase wood products from sustainably managed forests and woodland.

We are also conscious of the environment in the way we run our fleet vehicles. For instance, some of them are electric vehicles and we make sure that the others have the lowest possible CO<sub>2</sub> emission figures



We use exclusively green energy for the production of Shinnoki. One third of it comes from the solar panels on the roofs of our production hall. The rest is externally purchased green energy. We have also shown our commitment to sustainable energy production by participating in the "Grensland" wind farm in Menen.

# SHINNOKI

## PREFINISHED WOOD PANELS



Recycling

We need heat when gluing the veneer layer onto the board. We get that from burning our waste wood - a form of recycling that reduces our environmental footprint considerably.



12 types of wood are FSC certified



We check all the raw materials that we use for the Shinnoki product range thoroughly before buying. For instance, the wood comes exclusively from responsibly managed sources. Our parent company Decospan was the first FSC certified wood processing company. On top of that, we have adopted our own Pure Wood Charter. You can read more about that on [www.decospan.com/en/downloads](http://www.decospan.com/en/downloads).

- All our veneers are FSC certified, except for Shadow Macassar, Sand Ash, Midnight Ash, Dusk Fraké and Tempered Fraké; these types of wood come from areas where the FSC is not active, but our suppliers have all accepted our Pure Wood Charter. More information is available on [www.decospan.com/en/downloads](http://www.decospan.com/en/downloads).
- Our MDF base boards are FSC certified (MIX 70%).



Produced without addition of urea-formaldehyde



The glues, stains and varnishes that we use to make Shinnoki do not contain urea-formaldehyde or other harmful VOCs (volatile organic compounds). The result: better air quality in your home.

---

# LOOKBOOK

**SMOKED WALNUT**

Kitchen, private residence  
Architect: Johan Van Staeyen





**MYSTERY OAK**

Bedroom, private residence

Produced by: Dylan &amp; van Laatum, Amsterdam - Photo: Mercé Wouthuysen

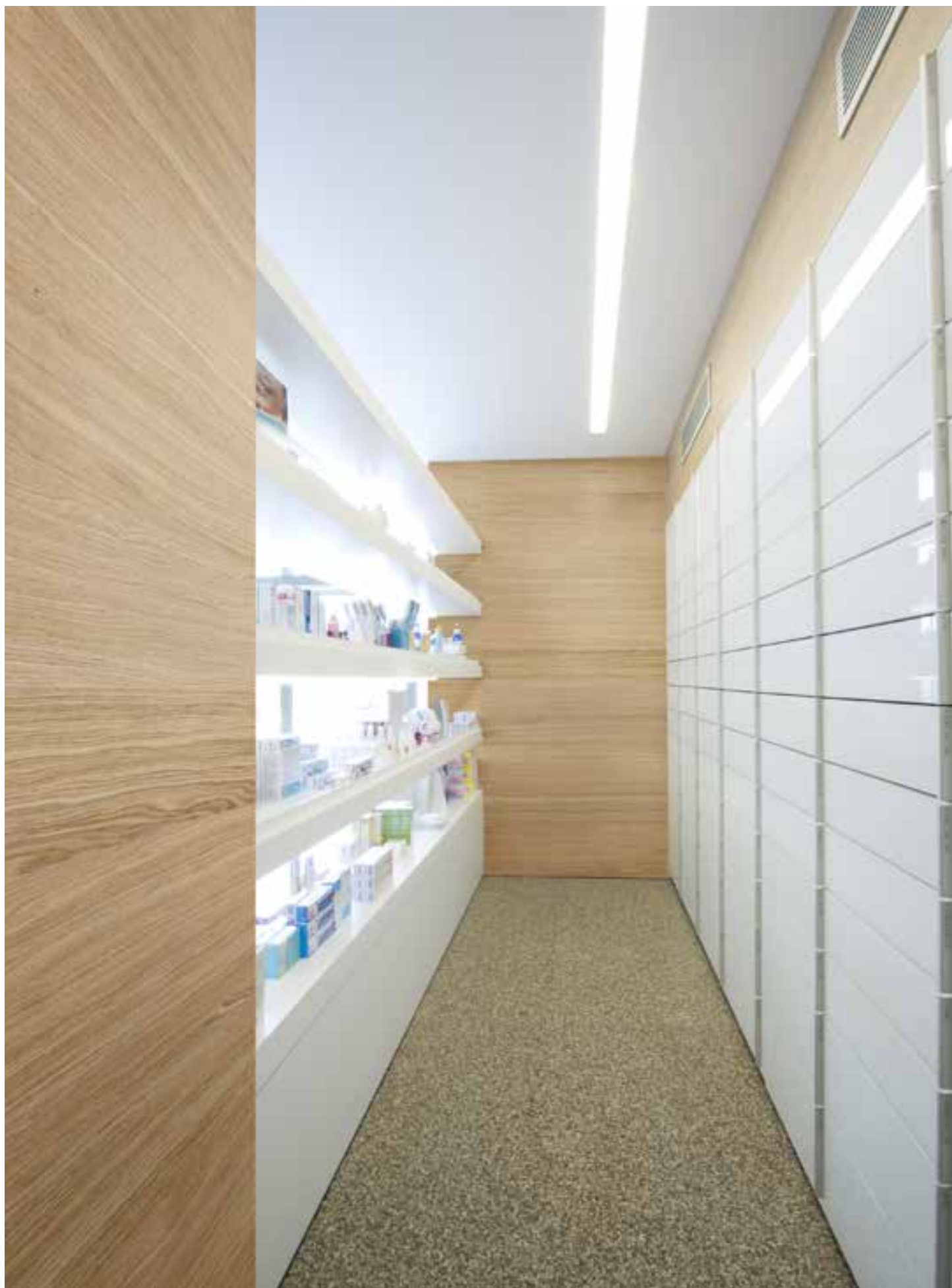


14 **DESERT OAK**

Kitchen, private residence  
Architect: Egide Meertens







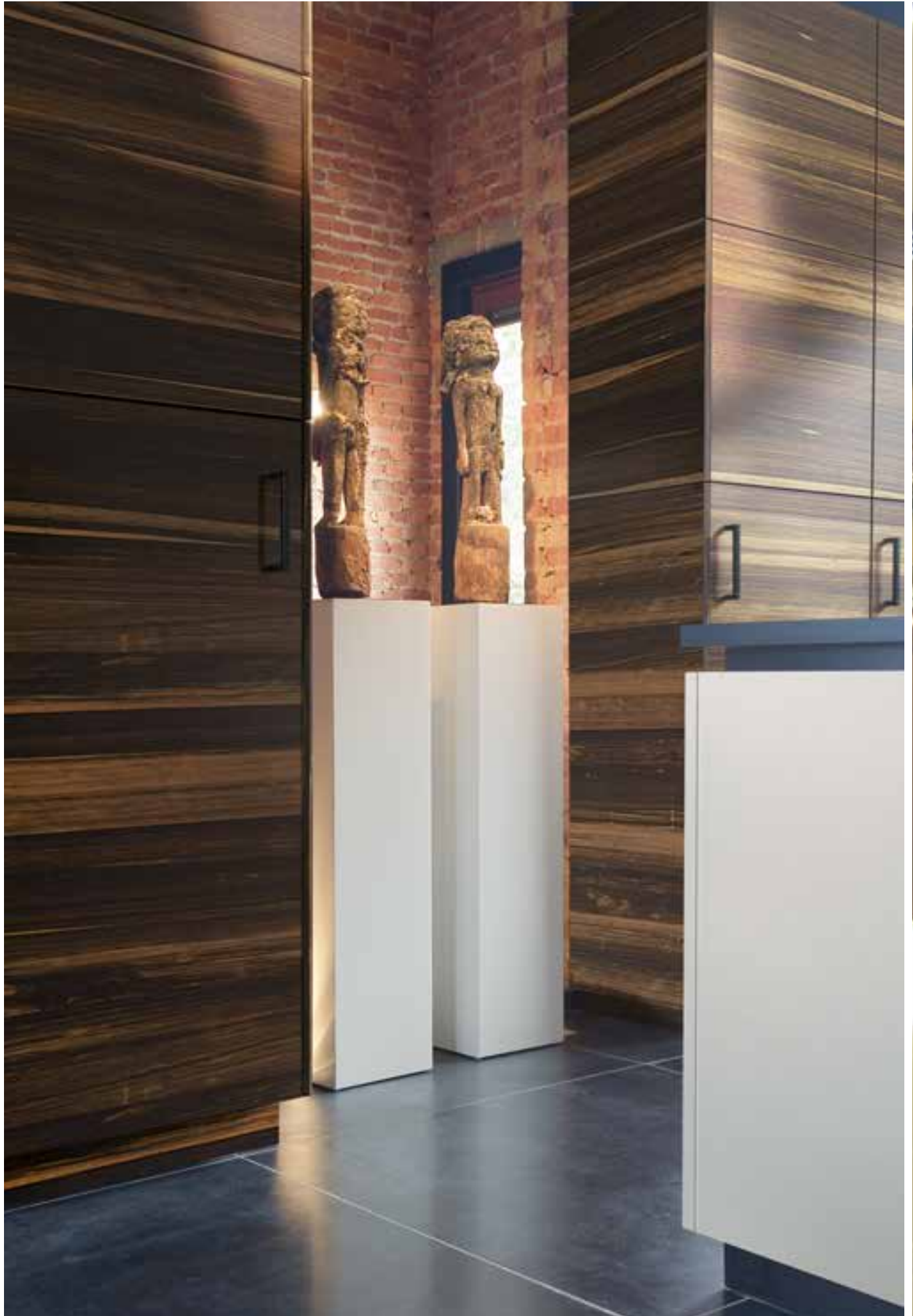






Loft

Architect: Bart Van Wijk





**GRANITE WALNUT**

Kitchen, private residence

Architect: Bart Cobbaert denc!-studio









**DUSK FRAKÉ**

Kitchen, private residence  
Architect: Peter Geraerts





Kitchen, private residence  
Architect: Jean-François Salée

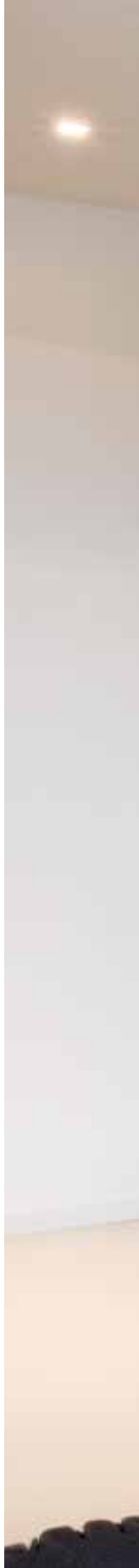




**TEMPERED FRAKÉ**

Wardrobes, private residence

Architects: Delphine Deceuninck &amp; Bart Cobbaert





**NERO LATI**

Buffet cabinet, private residence

Architect: Steven De Jaeghere





**MANHATTAN OAK**

Kitchen, private residence

Produced by: Dylan &amp; van Laatum, Amsterdam - Photo: Mercé Wouthuysen





**MIDNIGHT ASH**

Hallway, private residence  
Architectenbureau Stein Van Rossem



# TABLE

Stock program

# COLLECTION

## SHINNOKI

PREFINISHED WOOD PANELS

	PANELS		PLY	EDGE BANDINGS*					
	Double-sided	Single-sided		VENEER 0,6 mm			ABS 1 mm		
	2790 x 1240 x 19 mm			3000 x 1220 x 1,5 mm	with adhesive	without adhesive		without adhesive	
	15 panels/pack	25 panels/pack		5 pieces/pack	24 mm	24 mm	44 mm	24 mm	44 mm
				roll of 50 m	roll of 100 m		roll of 50 m		
NATURAL OAK	S2-PA2S-01	S2-PA1S-01	S2-PLY-01	S2-EDG24-01	S2-ED24-01	S2-ED44-01	S2-EDA24-01	S2-EDA44-01	
IVORY OAK	S2-PA2S-02	S2-PA1S-02	S2-PLY-02	S2-EDG24-02	S2-ED24-02	S2-ED44-02	S2-EDA24-02	S2-EDA44-02	
MILK OAK	S2-PA2S-03	S2-PA1S-03	S2-PLY-03	S2-EDG24-03	S2-ED24-03	S2-ED44-03	S2-EDA24-03	S2-EDA44-03	
DESERT OAK	S2-PA2S-04	S2-PA1S-04	S2-PLY-04	S2-EDG24-04	S2-ED24-04	S2-ED44-04	S2-EDA24-04	S2-EDA44-04	
MANHATTAN OAK	S2-PA2S-05	S2-PA1S-05	S2-PLY-05	S2-EDG24-05	S2-ED24-05	S2-ED44-05	S2-EDA24-05	S2-EDA44-05	
MYSTERY OAK	S2-PA2S-06	S2-PA1S-06	S2-PLY-06	S2-EDG24-06	S2-ED24-06	S2-ED44-06	S2-EDA24-06	S2-EDA44-06	
ANTIQUE OAK	S2-PA2S-07	S2-PA1S-07	S2-PLY-07	S2-EDG24-07	S2-ED24-07	S2-ED44-07	S2-EDA24-07	S2-EDA44-07	
CHOCOLATE OAK	S2-PA2S-08	S2-PA1S-08	S2-PLY-08	S2-EDG24-08	S2-ED24-08	S2-ED44-08	S2-EDA24-08	S2-EDA44-08	
VANILLA LARCH	S2-PA2S-09	S2-PA1S-09	S2-PLY-09	S2-EDG24-09	S2-ED24-09	S2-ED44-09	S2-EDA24-09	S2-EDA44-09	
DUSK FRAKÉ	S2-PA2S-10	S2-PA1S-10	S2-PLY-10	S2-EDG24-10	S2-ED24-10	S2-ED44-10	S2-EDA24-10	S2-EDA44-10	
TEMPERED FRAKÉ	S2-PA2S-11	S2-PA1S-11	S2-PLY-11	S2-EDG24-11	S2-ED24-11	S2-ED44-11	S2-EDA24-11	S2-EDA44-11	
SAND ASH	S2-PA2S-12	S2-PA1S-12	S2-PLY-12	S2-EDG24-12	S2-ED24-12	S2-ED44-12	S2-EDA24-12	S2-EDA44-12	
MIDNIGHT ASH	S2-PA2S-13	S2-PA1S-13	S2-PLY-13	S2-EDG24-13	S2-ED24-13	S2-ED44-13	S2-EDA24-13	S2-EDA44-13	
GRANITE WALNUT	S2-PA2S-14	S2-PA1S-14	S2-PLY-14	S2-EDG24-14	S2-ED24-14	S2-ED44-14	S2-EDA24-14	S2-EDA44-14	
SMOKED WALNUT	S2-PA2S-15	S2-PA1S-15	S2-PLY-15	S2-EDG24-15	S2-ED24-15	S2-ED44-15	S2-EDA24-15	S2-EDA44-15	
SHADOW MACASSAR	S2-PA2S-16	S2-PA1S-16	S2-PLY-16	S2-EDG24-16	S2-ED24-16	S2-ED44-16	S2-EDA24-16	S2-EDA44-16	
NERO LATI	S2-PA2S-17	S2-PA1S-17	S2-PLY-17	S2-EDG24-17	S2-ED24-17	S2-ED44-17	S2-EDA24-17	S2-EDA44-17	

The current table can be found on  
[www.shinnoki.com](http://www.shinnoki.com)

\* The edge bandings have been designed to let you finish the edges of Shinnoki panels perfectly: the colour and structure match the surface exactly. The veneer edge bandings are stained in the wood itself. The ABS edge bandings have a thickness of 1 mm and are completely made out of ABS (Acrylonitrile-Butadiene-Styrene), only the Shadow Macassar has a thickness of 1,5 mm and is foreseen with a 0,5m veneer on the ABS

## TECHNICAL INFO

### DESCRIPTION

Shinnoki is a range of ready-made wood veneer sheets and panels: brushed, stained and lacquered, so that they do not need any further finishing. The veneer is mixmatch joined in order to obtain more uniform quality and it is available in an exclusive color palette of 17 contemporary tints. Matching edge bandings are available.

### TECHNICAL DETAILS

#### Panel sizes

Length 2790 mm; Width 1240 mm and Thickness 19 mm.

#### Finishing

- Environmentally friendly acrylate urethane UV-cured varnish (99.5% solids, very low solvent emission)
- Matt finish (10% gloss)
- Stained using water-based varnishes

#### Protection

Removable transparent protective foil.

#### Packaging

**Single-sided Shinnoki panels:** 25 panels per pack, with the top panel upside down and protected with a cardboard cover sheet. Gross dimensions per pack: 2800x1250x580 mm. Gross weight per pack: 1200 kg  
**Double-sided Shinnoki panels:** 15 panels per pack, with the top panel upside down and protected with a cardboard cover sheet. Gross dimensions per pack: 2800x1250x390 mm. Gross weight per pack: 720 kg  
**Shinnoki ply:** Loose sheets of wood veneer (3-ply) obtainable per 5 pcs. The gross dimensions of the sheets are 3000x1220x1.5 mm and they are packed in black plastic and protected for transportation.

#### Edge bandings

The edge bandings are available in matching colors, both pre-glued for manual gluing or without adhesive, for gluing with an edge strip gluing machine.

The 0.6mm veneer edge bandings are packaged per roll: the overall length of a non-glued roll is 100m (widths of 24mm and 44mm) and a pre-glued roll is 50m (width 24mm).

Edge bandings of 1mm are also available in ABS (a kind of PVC). The color and structure are designed to fit the Shinnoki designs. These are available in widths of 24mm and 44mm and in rolls of 50m.

#### Correcting pens

Correcting pens in the matching colors are available for small corrections to the panels or edges.

### APPLICATION

Shinnoki is only for interior applications.

### PROCESSING

For the processing of Shinnoki we refer to the clips on [www.shinnoki.com](http://www.shinnoki.com).

### MAINTENANCE TIPS

Shinnoki panels are finished with six tough polyurethane varnish layers and they are easy to maintain.

Normal maintenance involves no more than removing dust with a soft, dry cloth. A slightly damp cloth can also be used, but be careful not to use too much water. If liquids are spilled, it is recommended that they should be dried off immediately to avoid damp patches being left.

Tough dirt can be removed using a mild cleaning agent or a detergent. Never use a cleaner based on acetone or ethyl butyl acetate; these substances can leave marks that cannot be removed. Wax and oil can also cause damage.

We have Shinnoki correcting pens and paint sticks for repairing small scratches. The correcting pens are available in various colors that are perfectly matched to the Shinnoki collection.

	2 IN 1 PEN	2 PENS	
	COLOUR + LACQUER	COLOUR PEN	LACQUER PEN
NATURAL OAK	PEN 01		
IVORY OAK	PEN 02-03		
MILK OAK	PEN 03		
DESERT OAK	PEN 04-05		
MANHATTAN OAK	PEN 04-05		
MYSTERY OAK		PEN 06-10-14	PEN 00
ANTIQUE OAK		PEN 07-11	PEN 00
CHOCOLATE OAK		PEN 08-13-17	PEN 00
VANILLA LARCH	PEN 09-12		
DUSK FRAKÉ		PEN 06-10-14	PEN 00
TEMPERED FRAKÉ		PEN 07-11	PEN 00
SAND ASH	PEN 09-12		
MIDNIGHT ASH		PEN 13	PEN 00
GRANITE WALNUT		PEN 06-10-14	PEN 00
SMOKED WALNUT		PEN 15-16	PEN 00
SHADOW MACASSAR		PEN 15-16	PEN 00
NERO LATI		PEN 08-13-17	PEN 00

# SHINNOKI

PREFINISHED WOOD PANELS

	TEST METHOD	PANELS	PLY
<b>GENERAL PROPERTIES</b>			
Dimensions	EN 14354	2790 x 1240 x 19 mm	3000 x 1220 x 1,5 mm
Thickness of the top layer	EN 14354	0.6 mm	0.6 mm
Deviation of thickness	EN 14354	≤ 0.5 mm	≤ 0.2 mm
Deviation of squareness	EN 324-2	±2 mm/m	±5 mm/m
Cup in width direction	EN 14354	2%	/
Flatness deviation	EN 14354	3%	/
Internal bond	EN 319	0.7 N/mm <sup>2</sup>	/
Veneer gluing adhesion	EN 204/205	≥ 1 N/mm <sup>2</sup>	/
Density	EN 323/EN672	730 kg/m <sup>3</sup>	depending on wood species
Layer thickness varnish	EN ISO 2808	±55 µm	±55 µm
Moisture content	EN 322	5%-9%	/
Warranty	Decospan NV	2 years	2 years
<b>CLASSIFICATION PROPERTIES</b>			
Resistance to chemical agents	EN 423/part 2	class 4	class 4
Resistance to hot liquids	EN 12720	class 5*	class 5*
Resistance to cold liquids: foodstuffs	EN 12720	class 5*	class 5*
Resistance to cold liquids: household products - detergents, cleaning agents, disinfectants - acetone, ethyl butyl acetate, black ink, black pen	EN 12720	class 5* class 2*	class 5* class 2*
<b>ADDITIONAL PROPERTIES</b>			
Appearance of the lacquer	EN 438/2-5	ok	ok
Gloss	EN 2813	10% ± 3%	10% ± 3%
Hardness of the lacquer	DIN 53154	1,5 N	/
Impact resistance acc. to Wegner	EN 438-2/11	≥ 2 N	/
Elasticity of the lacquer	CEN/TC112 (Brinell)	2Hb	2Hb
Colour fastness	EN 105-B02	grade > 6	grade > 6
Colour stability	EN 15187	class 4	class 4
Reflectance	EN 13721	45	45
Burning cigarette	EN 438-2,18	class 3	/
Thermal resistance	EN 13986	0,16 m <sup>2</sup> K/W	/
Thermal conduction	EN 13986	0,11 W/mK	/
Biological durability	EN 335	2	2
Well managed forests		FSC except for Shadow Macassar, Sand Ash, Midnight Ash, Dusk Fraké and Tempered Fraké	
Resistance to termites		good	/
<b>SAFETY PROPERTIES</b>			
VOC loss	EN 664	<2,1%	<2,1%
Formaldehyde emission	E1 (EN 717-1)	E1 non added formaldehyde	E1 (<013 ppm)
Formaldehyde emission	E1 (EN 717-2)	E1 non added formaldehyde	E1 (<3,5 mg/m <sup>3</sup> h)
Excudation of plasticizers	EN 665	<1%	0%
PCP (pentachlorophenol)	CEN/TR 14823	< 5	< 5

\* 5 No visible change  
4 Barely visible change in gloss and colour  
3 Small changes in gloss or colour; the structure of the tested surface was unchanged  
2 Severe marking visible, but the structure of the tested surface was largely undamaged  
1 Severe marking visible and the structure of the tested surface was affected  
0 Test surface badly affected or destroyed

# SHINNOKI

PREFINISHED WOOD PANELS

Decospan nv  
Industriezone Grensland  
Lageweg 33  
8930 Menen - Belgium  
tel +32 56 52 88 00  
fax +32 56 52 88 03  
e-mail [info@shinnoki.com](mailto:info@shinnoki.com)

[www.shinnoki.com](http://www.shinnoki.com)

The photos of the different wood species, as shown in this brochure,  
are a representation of a unique part of wood and are not binding for future deliveries.

Shinnoki is a product of  **Decospan**<sup>®</sup>  
PASSIONATE ABOUT WOOD VENEER

